



# GAT MONTHLY MEMBERSHIP PROGRESS REPORT

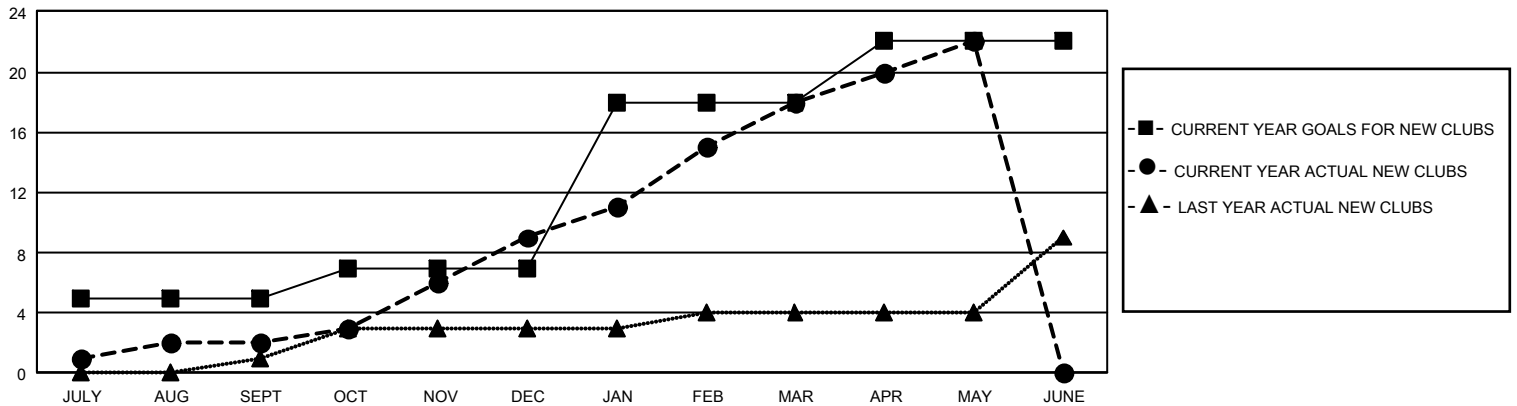
Results as of: 5/31/2025

## GMT Constitutional Area 8, Group E

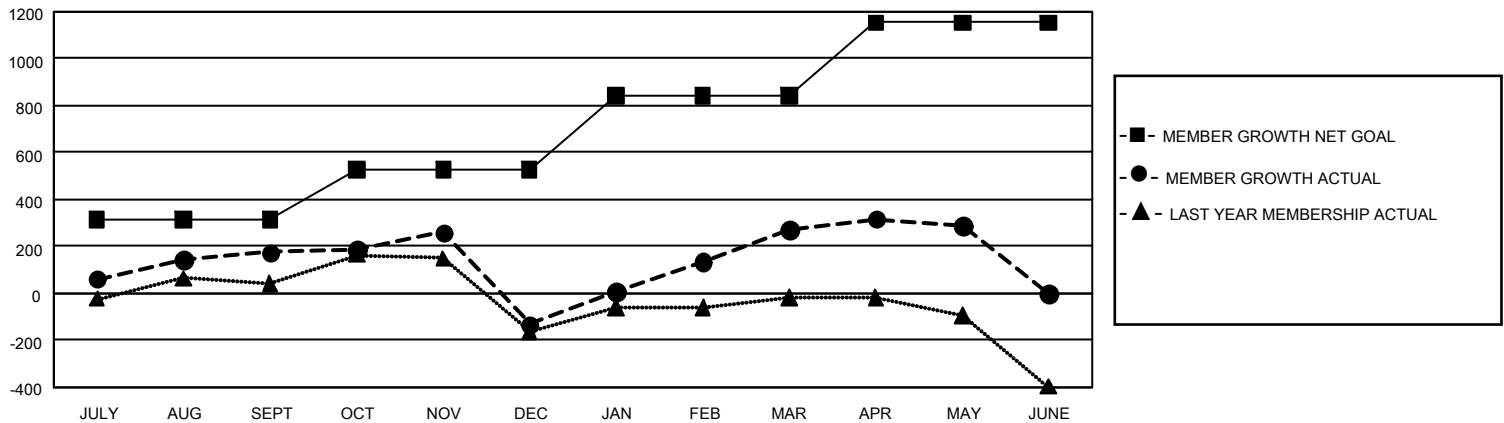
REPORT DOES NOT INCLUDE CLUBS IN UNDISTRICTED AREAS.

Clubs				Members			
RESULTS FOR 2024-2025				RESULTS FOR 2024-2025			
QUARTER	NEW CLUB GOAL	NEW CLUBS	DROPPED CLUBS	QUARTER	MEMBER GROWTH NET GOAL	MEMBER GROWTH ACTUAL	DROPPED MEMBERS ACTUAL (including transfers)
JULY/AUG/SEPT	15	2	3	JULY/AUG/SEPT	313	394	158
OCT/NOV/DEC	6	7	14	OCT/NOV/DEC	215	548	765
JAN/FEB/MAR	33	9	1	JAN/FEB/MAR	313	634	129
APR/MAY/JUNE	12	4	2	APR/MAY/JUNE	313	242	166

GOALS AND ACTUAL NEW CLUBS CUMULATIVE



GOALS AND ACTUAL MEMBERS CUMULATIVE



DROPPED CLUBS: 18

173 CLUBS OF 293 ADDED 1 OR MORE NEW MEMBERS

### GENDER DISTRIBUTION

MALE	4,145 (54.55%)
FEMALE	3,448 (45.37%)
NON BINARY	0 (0.00%)
PREFER NOT TO ANSWER	6 (0.08%)

### DROPPED MEMBERS

DECEASED	26
CLUB CANCELLED	365
OTHER	827
<b>TOTAL</b>	<b>1,218</b>

[CLICK HERE FOR CUMULATIVE MEMBERSHIP DATA](#)

TOTAL FAMILY UNIT MEMBERS	1,961
FAMILY MEMBERS PAYING HALF DUES	1,204